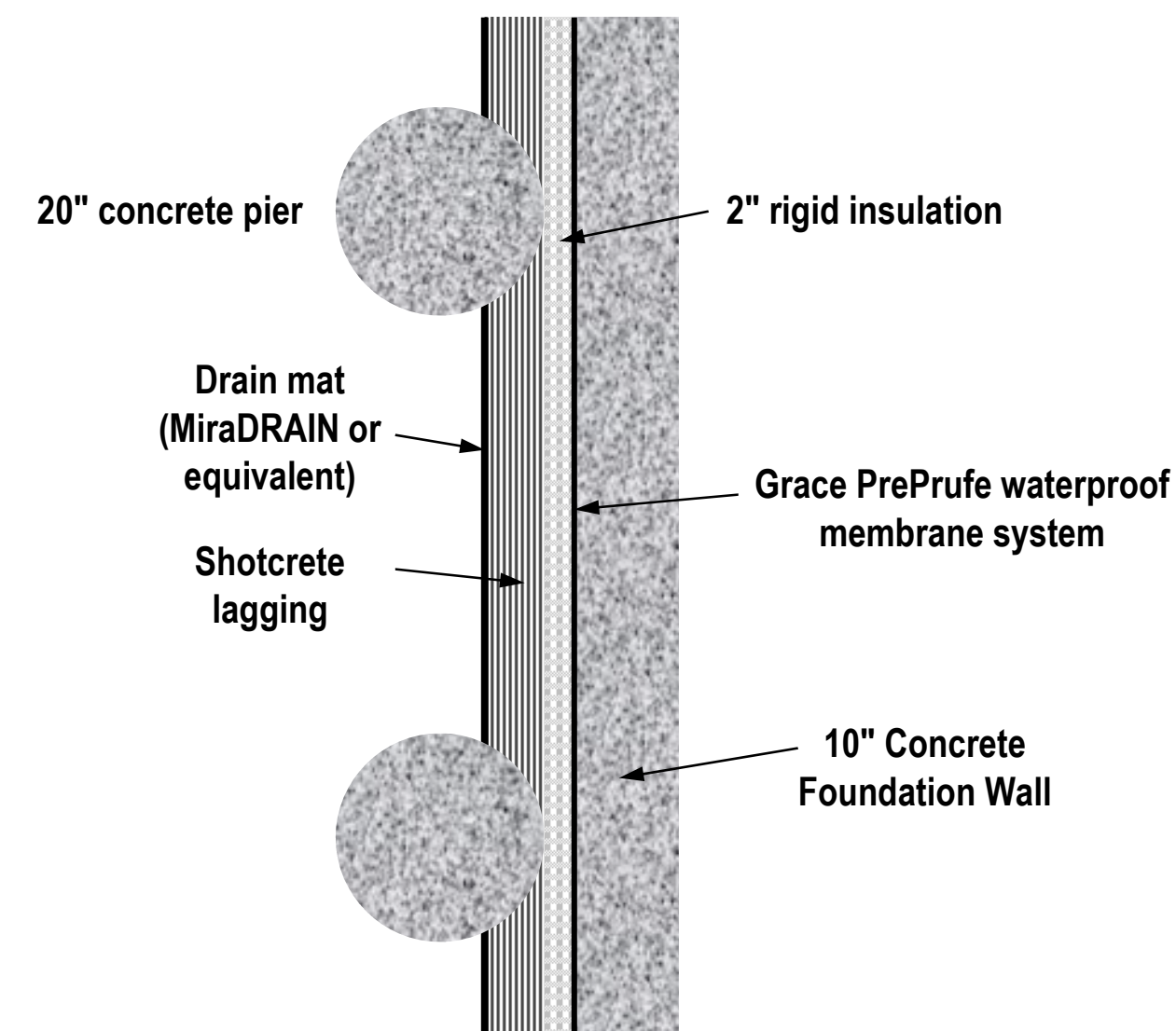
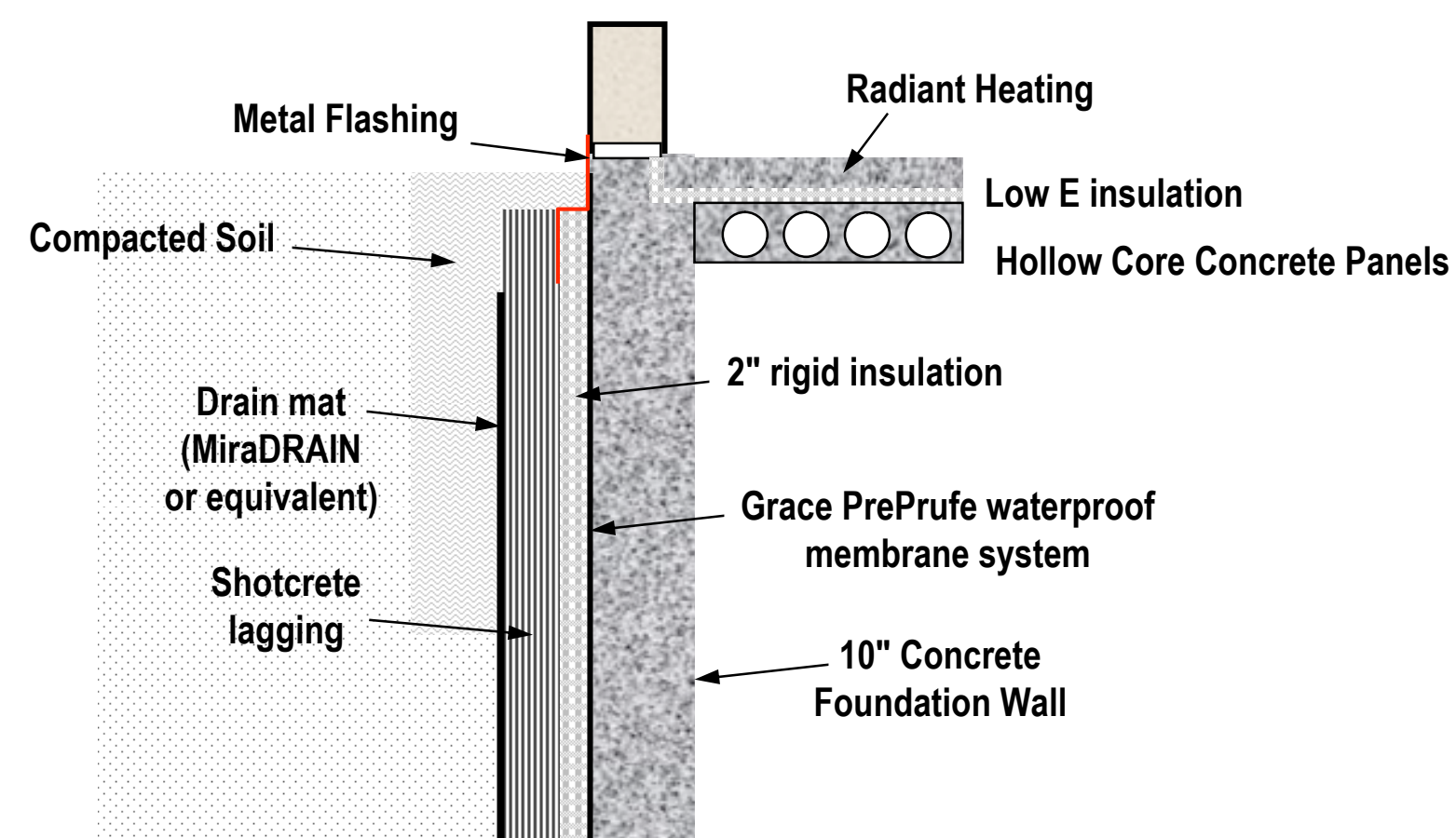


Plumbing Fixtures

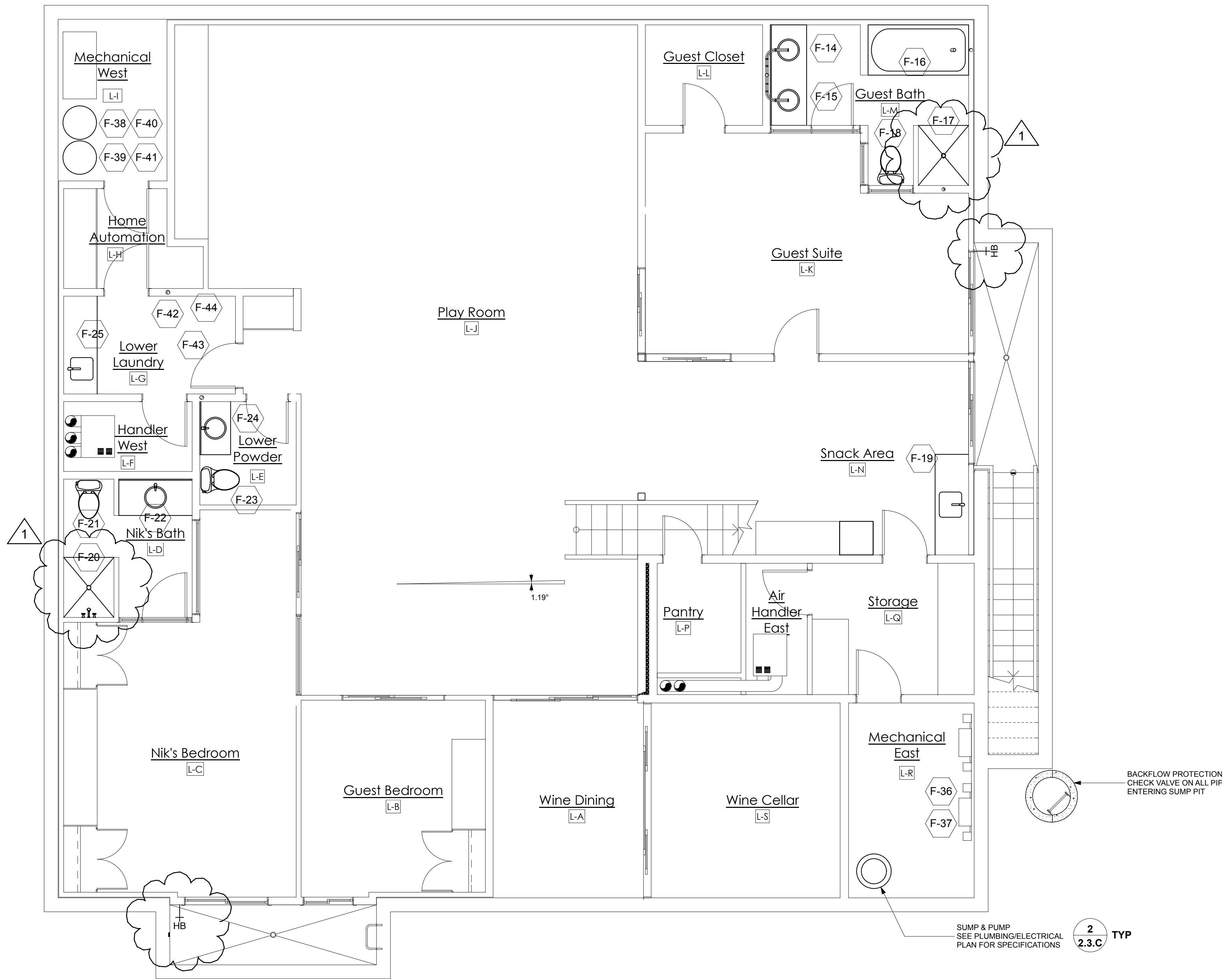
Location	Ref.	Description
L-M Guest Bath	F-14	Sink with hot/cold faucets and drain to Basement Sump/Sewage Basin
	F-15	Sink with hot/cold faucets and drain to Basement Sump/Sewage Basin
	F-16	Tub with hot/cold faucets and drain to Basement Sump/Sewage Basin
	F-17	Hot/cold shower faucets
	F-18	Dual flush toilet with drain to Basement Sump/Sewage Basin
L-N Snack Area	F-19	Sink with hot/cold faucets and drain to Basement Sump/Sewage Basin
	F-21	Dual flush toilet with drain to Basement Sump/Sewage Basin
L-D Play Room Bath	F-20	Hot/cold shower faucets
	F-22	Shower drain to Basement Sump/Sewage Basin
	F-23	Hot/cold faucets with drain to Basement Sump/Sewage Basin
	F-24	Dual flush toilet with drain to Basement Sump/Sewage Basin
L-E Lower Powder	F-23	Dual flush toilet with drain to Basement Sump/Sewage Basin
	F-24	Sink with hot/cold faucets and drain to Basement Sump/Sewage Basin
	F-25	Hot/cold faucets with drain to Basement Sump/Sewage Basin
L-G Lower Laundry	F-44	Hot/cold faucets for washing machine
	F-43	Drain to Basement Sump/Sewage Basin
	F-42	Floor drain (with trap primers) to Basement Sump/Sewage Basin
	F-41	Supply line from Swimming Pool Filter
L-I Mechanical West	F-40	Exhaust line to Swimming Pool (hot water)
	F-39	Cold water supply line
	F-38	Floor drain (with trap primers) to Basement Sump/Sewage Basin
	F-37	Basement Sump/Sewage Basin
L-R Mechanical East	F-36	Cold water supply line



2 Drainage Mat/Insulation Detail - Plan View
Scale: 1" = 1'-0"



3 Drainage Mat/Insulation Detail - Section View
Scale: 1" = 1'-0"



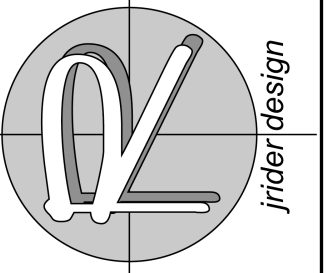
1 Plumbing Fixtures - Basement
Scale: 1/4" = 1'-0"

Note: Prior to commencing any work, the existing sanitary sewer must be properly capped. See 10.2 Grading & Drainage plan, dated 11/21/08, for all exterior sump and exterior drainage.

THIS WORK WAS PREPARED BY JOHN A. RIDER, ASSOCIATE AIA OR UNDER MY SUPERVISION.

Signature

Jrider + Design
73 PLEASANT RIDGE AVENUE
SAN JOSE, CALIFORNIA 95127
408-259-1515 phone/fax



MEKECHUK/SINCLAIR RESIDENCE
REMODEL AND NEW BASEMENT
17509 VIA SERENO
MONTE SERENO, CA 95030

Rev	Description
1	F.C. 01/28/09

Date: 11/29/08
Scale: AS NOTED
Drawn By: JR
Checked By: John A. Rider
Job: 11-08
Sheet Number:

2.4.B